



شركة الاستثمار الوطنية
NATIONAL INVESTMENTS COMPANY

Bursa Kuwait – Daily Market Report MENA Securities – Research & Studies Dep.

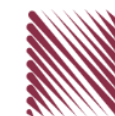
05th October 2022



www.nic.com.kw

DAILY MARKET COVERAGE REPORT

NIC MENA SECURITIES - RESEARCH AND STUDIES DEP



Kuwait Market Watch

Wednesday, October 5, 2022

Index	Close	DTD Chg Net	DTD (%)	YTD (%)	52W High	52W Low	MKT CAP Bn (KD)	PBV (X)	PE (X)	DY (%)
All Share Index	7,249.17	62.64	0.87%	2.92%	8,472.15	6,788.83	46.34	2.00	31.51	3.99
Premier Index	8,128.81	80.68	1.00%	6.41%	9,437.37	7,343.90	37.31	2.20	32.51	4.38
Main Index	5,395.57	18.02	0.34%	-8.34%	6,600.62	5,190.37	9.03	1.18	27.39	2.40
NIC 50 Index	9,080.40	75.25	0.84%	6.55%	10,553.82	8,195.69	36.61	2.20	32.51	4.38

Index	Value Mn(KD)	Volume (Mn share)
All Share Index	75.94	257.12
Premier Index	62.62	120.84
Main Index	13.32	136.28
NIC 50 Index	71.89	205.81

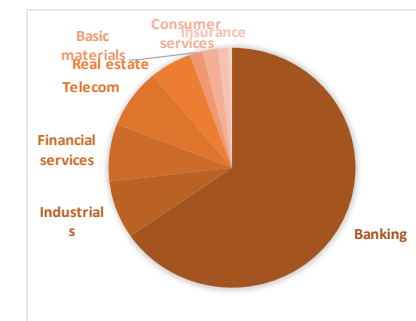
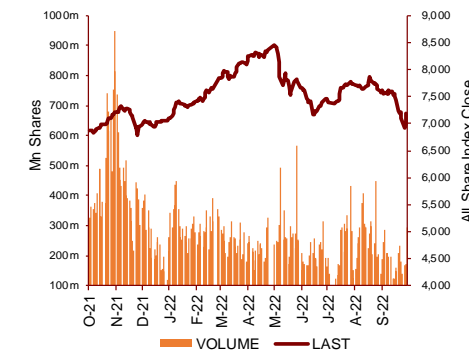
Today's Top 5 Gainer %	Close KD	Value KD	DTD (%)
Al Ahleia Insurance	0.555	6,501	8.82%
Al Manar Financing and Leasing	0.056	1,550	8.82%
Al-Arabiya Real Estate	0.034	82,466.118	7.55%
First Dubai for Real Estate De	0.049	385,391	6.52%
United Real Estate	0.077	0.385	6.21%

Today's Top 5 by Value	Close KD	Trade Val Mn(KD)	DTD (%)
Kuwait Finance House	0.850	30.42	2.04%
Agility Public Warehousing	0.697	8.71	-0.43%
National Bank of Kuwait	1.033	5.26	2.28%
National Industries Group Hold	0.227	5.08	-2.58%
National Consumer Holding	0.111	3.60	-1.77%

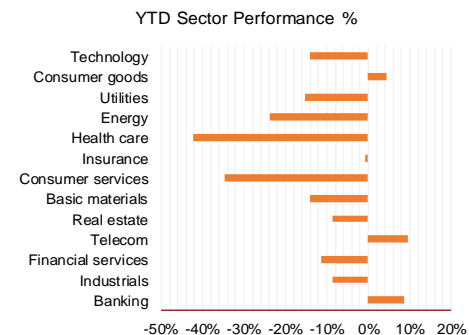
Market Breadth	UP	Down	No Chg
All Share Index	51	65	37
Premier Index	11	12	3
Main Index	40	53	34
NIC 50 Index	20	25	5

Today's Top 5 Loser %	Close KD	Value KD	DTD (%)
Tijara and Realestate Inves	0.049	178,183	-10.56%
Wethaq Takaful Insurance	0.037	31,124	-8.19%
Manazel Holding	0.027	48,157	-6.53%
Educational Holding Group	2.831	23,390	-5.63%
Kuwait and Middle East Fini	0.109	2,272	-5.22%

Top 5 by Volume	Close KD	Trade Vol Mn(Shrs)	DTD (%)
Kuwait Finance House	0.850	35.41	2.04%
National Consumer Holding	0.111	31.52	-1.77%
National Industries Group H	0.227	21.89	-2.58%
GFH Financial Group	0.079	16.99	-0.76%
Agility Public Warehousing	0.697	12.34	-0.43%



Sector	Close	DTD Chg Net	DTD (%)	YTD (%)	52W High	52W Low	MKT CAP Bn (KD)	PBV (X)	PE (X)	DY (%)
Banking	1,788.36	27.240	1.55%	8.5%	1,992.2	1,552.3	29.914	1.64	24.74	1.89
Industrials	1,040.73	-1.520	-0.15%	-8.7%	1,443.6	976.3	3.555	1.00	19.84	3.83
Financial services	1,242.05	-18.910	-1.50%	-11.4%	1,678.3	1,190.4	3.572	0.98	30.29	2.96
Telecom	1,191.23	-0.530	-0.04%	9.4%	1,514.7	1,055.9	3.645	1.35	13.99	2.88
Real estate	1,214.68	1.750	0.14%	-8.6%	1,438.0	1,155.8	2.537	0.71	36.09	1.36
Basic materials	881.85	2.780	0.32%	-14.2%	1,233.3	846.0	0.769	1.24	9.25	6.03
Consumer services	474.91	-2.740	-0.57%	-34.7%	792.7	449.8	0.924	2.27	28.30	1.74
Insurance	1,543.91	23.550	1.55%	-0.8%	1,675.7	1,430.3	0.615	0.84	45.83	5.31
Health care	459.73	0.000	0.00%	-42.3%	821.7	420.4	0.228	15.73	12.57	0.96
Energy	1,054.06	-34.360	-3.16%	-23.8%	1,592.9	975.7	0.213	0.81	20.67	2.22
Utilities	507.89	0.000	0.00%	-15.4%	650.0	500.0	0.212	2.17	14.78	9.33
Consumer goods	1,395.19	-0.930	-0.07%	4.5%	1,641.0	1,122.7	0.144	0.94	38.73	2.07
Technology	574.72	-13.830	-2.35%	-13.9%	843.9	539.1	0.008	0.70	NM	-
	7,249.17	62.64	0.87%	2.9%	8,472.2	6,788.8	46.34	2.00	31.51	3.99



DAILY MARKET COVERAGE REPORT

NIC MENA SECURITIES - RESEARCH AND STUDIES DEP

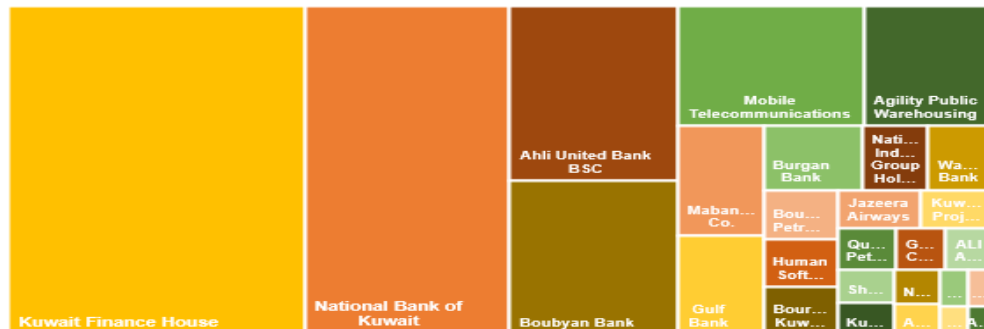


Premier Market

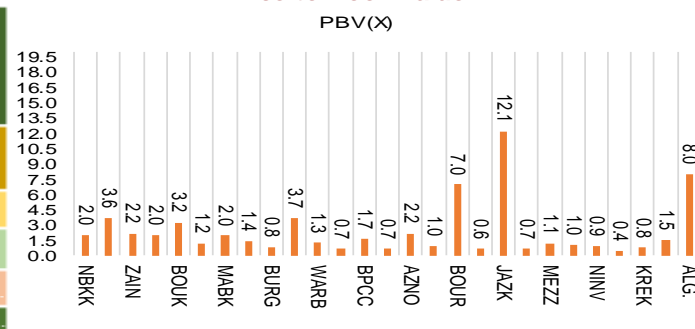
Wednesday, October 5, 2022

Premier Market	Price			Valuation Multiples			MKT Cap	Price Performance		Trading Indicators		ROE	ROA	52 Week (KD)		MKT Cap
	Close (KD)	Day Δ	Day % Δ	PBV(X)	PE(X)	DY%	Mn KD	MTD(%)	YTD (%)	Value (Mn KD)	(Mn Shrs)	(%)	(%)	High	Low	%
National Bank of Kuwait	1.033	0.023	2.28%	2.00	18.67	2.40	7,802	0%	9%	5.26	5.12	10.9%	1.4%	1.104	0.890	21.03%
Kuwait Finance House	0.850	0.017	2.04%	3.64	28.86	1.31	11,247	1%	12%	30.42	35.41	12.8%	1.6%	1.039	0.720	30.32%
Mobile Telecommunications	0.595	0.001	0.17%	2.17	14.06	5.56	2,575	-2%	0%	2.27	3.82	15.6%	4.3%	0.698	0.564	6.94%
Ahli United Bank BSC	0.305	0.000	0.00%	2.04	17.93	2.72	3,400	0%	21%	0.00	0.00	11.3%	1.6%	0.336	0.240	9.17%
Boubyan Bank	0.802	0.010	1.26%	3.24	52.87	0.57	2,998	0%	13%	1.03	1.29	6.7%	0.8%	0.965	0.681	8.08%
Agility Public Warehousing	0.697	-0.003	-0.43%	1.19	53.53	2.38	1,761	5%	-11%	8.71	12.34	2.7%	2.2%	1.062	0.634	4.75%
Mabane Co.	0.862	-0.008	-0.92%	1.97	18.24	1.52	1,070	0%	15%	0.23	0.27	11.2%	5.4%	0.910	0.715	2.89%
Gulf Bank	0.308	-0.003	-0.96%	1.44	17.43	2.14	975	0%	16%	2.93	9.38	8.5%	0.8%	0.385	0.224	2.63%
Burgan Bank	0.222	0.001	0.45%	0.82	18.80	2.15	729	0%	-7%	0.58	2.59	4.3%	0.7%	0.307	0.205	1.96%
Human Soft Holding	3.340	0.040	1.21%	3.69	7.72	12.12	406	0%	4%	0.05	0.02	48.7%	39.9%	3.704	3.006	1.10%
Warba Bank	0.231	0.001	0.43%	1.26	27.37	0.00	462	0%	-16%	1.47	6.34	4.8%	0.6%	0.298	0.216	1.25%
Qurain Petrochemical Industries	0.265	0.001	0.38%	0.65	10.14	6.82	284	0%	-24%	0.18	0.69	6.4%	5.2%	0.403	0.255	0.77%
Boubyan Petrochemical	0.809	0.003	0.37%	1.65	9.15	7.44	422	0%	-5%	0.11	0.14	19.1%	10.1%	1.125	0.769	1.14%
Kuwait Projects Company Holding	0.125	-0.005	-3.85%	0.66	320.51	3.85	306	-6%	-12%	0.43	3.36	0.2%	0.1%	0.215	0.118	0.82%
Shamal Az-Zour Al-Oula Power & Water	0.193	0.000	0.00%	2.17	14.78	9.33	212	-1%	-15%	0.11	0.56	19.1%	2.9%	0.247	0.190	0.57%
National Industries Group Holding	0.227	-0.006	-2.58%	0.95	5.22	4.77	489	0%	-6%	5.08	21.89	15.2%	6.5%	0.314	0.202	1.32%
Boursa Kuwait Securities Co	2.021	-0.089	-4.22%	6.96	21.61	3.08	406	-3%	0%	0.21	0.10	33.9%	22.2%	2.870	1.800	1.09%
Kuwait International Bank	0.200	-0.003	-1.48%	0.63	31.80	1.89	212	0%	-5%	0.37	1.80	1.9%	0.4%	0.259	0.192	0.57%
Jazeera Airways	1.680	-0.001	-0.06%	12.14	13.58	2.74	370	2%	30%	0.03	0.02	164.8%	12.1%	2.099	0.829	1.00%
Alafco Aviation Lease and Finance	0.176	0.002	1.15%	0.65	NM	0.00	168	1%	-19%	0.10	0.57	-15.9%	-3.4%	0.256	0.167	0.45%
Mezzan Holding	0.378	-0.002	-0.53%	1.11	38.73	4.13	118	0%	-35%	0.40	1.04	2.8%	1.3%	0.632	0.358	0.32%
Gulf Cable and Electrical Industries	1.120	0.008	0.72%	1.04	10.38	5.40	233	0%	29%	0.73	0.64	11.0%	NM	1.850	0.826	0.63%
National Investments	0.234	-0.008	-3.31%	0.93	8.75	18.60	187	1%	7%	0.58	2.38	10.9%	8.9%	0.475	0.190	0.50%
Alimtia Investment Group	0.075	-0.002	-2.23%	0.43	NM	11.81	76	-1%	-37%	0.11	1.50	-1.0%	-0.1%	0.140	0.069	0.21%
Kuwait Real Estate	0.103	-0.002	-1.90%	0.75	12.55	2.77	95	0%	-41%	0.94	8.92	6.0%	2.5%	0.187	0.097	0.26%
Integrated Holding	0.362	0.000	0.00%	1.49	27.68	2.76	92	0%	-2%	0.21	0.57	5.4%	3.4%	0.478	0.351	0.25%
ALI ALGanim	0.793	-0.004	-0.50%	7.96	12.44	0.00	220	1%	nm	0.06	0.07	27.8%	10.9%	0.966	0.750	0.59%
Total		80.68	1.00%	2.20	32.51	4.38	37,094	2.5%	6.4%	62.62	120.76					101%

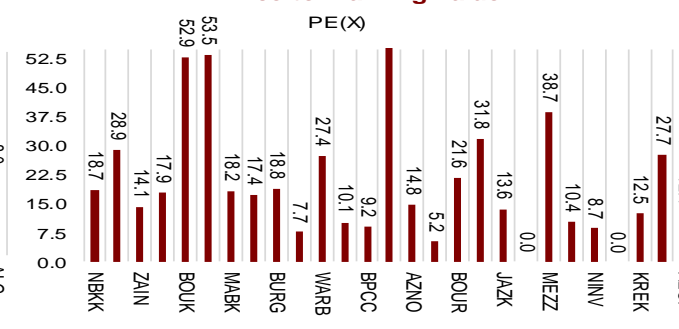
Market Capitalization



Price to Book Value

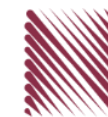


Price to Earning Value

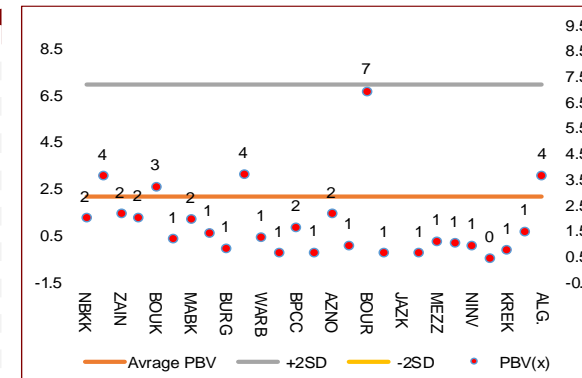


DAILY MARKET COVERAGE REPORT

NIC MENA SECURITIES - RESEARCH AND STUDIES DEP

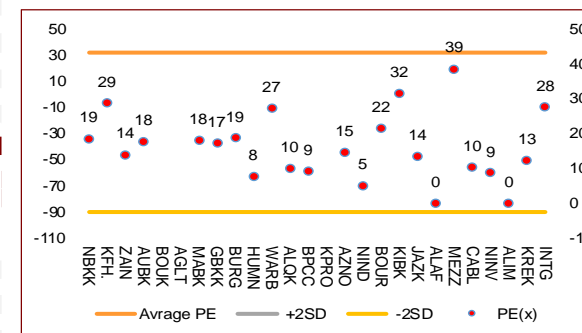


Premier Market	Price			Valuation Multiples			MKT Cap	Price Performance		ROE	ROA
Company	Close (KD)	Day Δ	Day % Δ	PBV(X)	PE (X)	DY%	Mn KD	MTD (%)	YTD (%)	(%)	(%)
National Bank of Kuwait	1.033	0.023	2.28%	2.00	18.7	2.40	7,802	0.0%	8.8%	10.9%	1.4%
Kuwait Finance House	0.850	0.017	2.04%	3.64	28.9	1.31	11,247	1.1%	12.4%	12.8%	1.6%
Mobile Telecommunications	0.595	0.001	0.17%	2.17	14.1	5.56	2,575	-1.5%	0.0%	15.6%	4.3%
Ahli United Bank BSC	0.305	0.000	0.00%	2.04	17.9	2.72	3,400	0.0%	20.7%	11.3%	1.6%
Boubyan Bank	0.802	0.010	1.26%	3.24	52.9	0.57	2,998	0.0%	12.6%	6.7%	0.8%
Agility Public Warehousing	0.697	-0.003	-0.43%	1.19	53.5	2.38	1,761	4.8%	-11.5%	2.7%	2.2%
Mabane Co.	0.862	-0.008	-0.92%	1.97	18.2	1.52	1,070	0.0%	15.2%	11.2%	5.4%
Gulf Bank	0.308	-0.003	-0.96%	1.44	17.4	2.14	975	0.0%	15.9%	8.5%	0.8%
Burgan Bank	0.222	0.001	0.45%	0.82	18.8	2.15	729	0.0%	-7.1%	4.3%	0.7%
Human Soft Holding	3.340	0.040	1.21%	3.69	7.7	12.12	406	0.0%	3.6%	48.7%	39.9%
Warba Bank	0.231	0.001	0.43%	1.26	27.4	0.00	462	0.0%	-15.7%	4.8%	0.6%
Qurain Petrochemical Industries	0.265	0.001	0.38%	0.65	10.1	6.82	284	0.0%	-23.6%	6.4%	5.2%
Boubyan Petrochemical	0.809	0.003	0.37%	1.65	9.2	7.44	422	0.0%	-5.0%	19.1%	10.1%
Kuwait Projects Company Holding	0.125	-0.005	-3.85%	0.66	320.5	3.85	306	-6.0%	-12.0%	0.2%	0.1%
Shamal Az-Zour Al-Oula Power & Water	0.193	0.000	0.00%	2.17	14.8	9.33	212	-1.0%	-15.4%	19.1%	2.9%
National Industries Group Holding	0.227	-0.006	-2.58%	0.95	5.2	4.77	489	0.0%	-5.8%	15.2%	6.5%
Boursa Kuwait Securities Co	2.021	-0.089	-4.22%	6.96	21.6	3.08	406	-2.8%	0.0%	33.9%	22.2%
Kuwait International Bank	0.200	-0.003	-1.48%	0.63	31.8	1.89	212	0.0%	-4.6%	1.9%	0.4%
Jazeera Airways	1.680	-0.001	-0.06%	12.14	13.6	2.74	370	1.5%	30.2%	164.8%	12.1%
Alafco Aviation Lease and Finance	0.176	0.002	1.15%	0.65	NM	0.00	168	1.1%	-19.3%	-15.9%	-3.4%
Mezzan Holding	0.378	-0.002	-0.53%	1.11	38.7	4.13	118	0.0%	-34.5%	2.8%	1.3%
Gulf Cable and Electrical Industries	1.120	0.008	0.72%	1.04	10.4	5.40	233	0.0%	28.6%	11.0%	9.0%
National Investments	0.234	-0.008	-3.31%	0.93	8.7	18.60	187	1.3%	6.8%	10.9%	8.9%
Alimtiq Investment Group	0.075	-0.002	-2.23%	0.43	NM	11.81	76	-1.3%	-36.9%	-1.0%	-0.1%
Kuwait Real Estate	0.103	-0.002	-1.90%	0.75	12.5	2.77	95	0.0%	-40.7%	6.0%	2.5%
Integrated Holding	0.362	0.000	0.00%	1.49	27.7	2.76	92	0.0%	-2.2%	5.4%	3.4%
ALI ALGanim	0.793	-0.004	-0.50%	3.66	12.4	0.00	220	1.0%	nm	27.8%	10.9%
Total	80.68	1.00%	2.20	32.51	4.38	37,094	2.5%	6.4%			

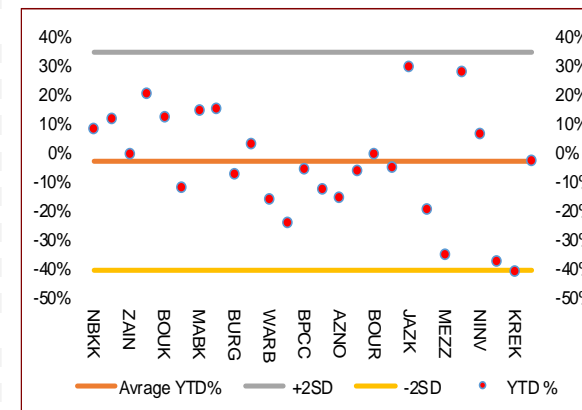


Premier Market	Price			Moving Average		RSI	MKT Cap	Price Performance		52 Week (KD)	
Discription	Close (KD)	Day Δ	Day % Δ	50 Day	200 Day	14 Day	Mn KD	MTD (%)	YTD (%)	High	Low
Premier Index	8,129	80.68	1.00%	8,470	8,413	33	37,094	2.5%	6.6%	9,437	7,344

Top 5 Performrs (Today's Price Change)											
Company	Close (KD)	Day Δ	Day % Δ	50 Day	200 Day	RSI	MKT Cap	MTD (%)	YTD (%)	High	Low
National Bank of Kuwait	1.033	0.023	2.28%	1.044	1.027	50	7,802	0.0%	8.8%	1.104	0.890
Kuwait Finance House	0.850	0.017	2.04%	0.880	0.871	40	11,247	1.1%	12.4%	1.039	0.720
Boubyan Bank	0.802	0.010	1.26%	0.822	0.799	45	2,998	0.0%	12.6%	0.965	0.681
Human Soft Holding	3.340	0.040	1.21%	3.356	3.309	46	406	0.0%	3.6%	3.704	3.006
Alafco Aviation Lease and Finance	0.176	0.002	1.15%	0.191	0.207	27	168	1.1%	-19.3%	0.256	0.167



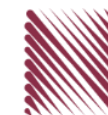
Middel Performrs (Today's Price Change)											
Company	Close (KD)	Day Δ	Day % Δ	50 Day	200 Day	RSI	MKT Cap	MTD (%)	YTD (%)	High	Low
Gulf Cable and Electrical Industries	1.120	0.008	0.72%	1.381	1.310	29	233	0.0%	28.6%	1.850	0.826
Burgan Bank	0.222	0.001	0.45%	0.235	0.254	33	729	0.0%	-7.1%	0.307	0.205
Warba Bank	0.231	0.001	0.43%	0.243	0.264	34	462	0.0%	-15.7%	0.298	0.216
Qurain Petrochemical Industries	0.265	0.001	0.38%	0.306	0.350	4	284	0.0%	-23.6%	0.403	0.255
Boubyan Petrochemical	0.809	0.003	0.37%	0.901	0.942	15	422	0.0%	-5.0%	1.125	0.769
Mobile Telecommunications	0.595	0.001	0.17%	0.602	0.611	51	2,575	-1.5%	0.0%	0.698	0.564
Ahli United Bank BSC	0.305	0.000	0.00%	0.305	0.282	50	3,400	0.0%	20.7%	0.336	0.240
Integrated Holding	0.362	0.000	0.00%	0.401	0.401	29	92	0.0%	-2.2%	0.478	0.351
Shamal Az-Zour Al-Oula Power & Water	0.193	0.000	0.00%	0.200	0.215	25	212	-1.0%	-15.4%	0.247	0.190
Agility Public Warehousing	0.697	-0.003	-0.43%	0.100	0.100	28	1,761	4.8%	-11.5%	1.210	0.996
Mezzan Holding	0.378	-0.002	-0.53%	0.413	0.509	22	118	0.0%	-34.5%	0.632	0.358
Mabane Co.	0.862	-0.008	-0.92%	0.837	0.807	51	1,070	0.0%	15.2%	0.910	0.715
Gulf Bank	0.308	-0.003	-0.96%	0.341	0.315	34	975	0.0%	15.9%	0.385	0.224
Kuwait International Bank	0.200	-0.003	-1.48%	0.212	0.220	31	212	0.0%	-4.6%	0.259	0.192
Kuwait Real Estate	0.103	-0.002	-1.90%	0.122	0.151	28	95	0.0%	-40.7%	0.187	0.097



Bottom 5 Performrs (Today's Price Change)											
Company	Close (KD)	Day Δ	Day % Δ	50 Day	200 Day	RSI	MKT Cap	MTD (%)	YTD (%)	High	Low
Alimtiq Investment Group	0.075	-0.002	-2.23%	0.089	0.111	26	76	-1.3%	-36.9%	0.140	0.069
National Industries Group Holding	0.227	-0.006	-2.58%	0.265	0.260	25	489	0.0%	-5.8%	0.314	0.202
National Investments	0.234	-0.008	-3.31%	0.285	0.313	27	187	1.3%	6.8%	0.475	0.190
Kuwait Projects Company Holding	0.125	-0.005	-3.85%	0.151	0.164	20	306	-6.0%	-12.0%	0.215	0.118
Boursa Kuwait Securities Co	2.021	-0.089	-4.22%	2.321	2.355	29	406	-2.8%	0.0%	2.870	1.800

DAILY MARKET COVERAGE REPORT

NIC MENA SECURITIES - RESEARCH AND STUDIES DEP



Banking Sector	Price			Valuation Multiples			MKT Cap	Price Performance		Trading Indicators		ROE	ROA	52 Week (KD)		MKT Cap
	Company	Close (KD)	Day Δ	Day % Δ	PBV(X)	PE(X)		DY%	Mn KD	MTD(%)	YTD (%)			Value (Mn KD)	(Mn Shrs)	
National Bank of Kuwait	1.033	0.023	2.28%	2.00	18.67	2.40	7,802	0.0%	8.8%	5.26	5.12	10.9%	1.4%	1.104	0.890	16.83%
Kuwait Finance House	0.850	0.017	2.04%	3.64	28.86	1.31	11,247	1.1%	12.4%	30.42	35.41	12.8%	1.6%	1.039	0.720	24.27%
Ahli United Bank BSC	0.305	0.000	0.00%	2.04	17.93	2.72	3,400	0.0%	20.7%	0.00	0.00	11.3%	1.6%	0.336	0.240	7.34%
Boubyan Bank	0.802	0.010	1.26%	3.24	52.87	0.57	2,998	0.0%	12.6%	1.03	1.29	6.7%	0.8%	0.965	0.681	6.47%
Commercial Bank of Kuwait	0.491	0.000	0.00%	1.16	12.24	4.07	973	0.0%	-2.0%	0.00	0.00	9.9%	1.9%	0.549	0.466	2.10%
Gulf Bank	0.308	-0.003	-0.96%	1.44	17.43	2.14	975	0.0%	15.9%	2.93	9.38	8.5%	0.8%	0.385	0.224	2.10%
Burgan Bank	0.222	0.001	0.45%	0.82	18.80	2.15	729	0.0%	-7.1%	0.58	2.59	4.3%	0.7%	0.307	0.205	1.57%
Ahli United Bank	0.264	0.001	0.38%	0.91	24.33	1.81	595	0.0%	-10.3%	0.09	0.36	3.7%	0.7%	0.324	0.250	1.28%
Warba Bank	0.231	0.001	0.43%	1.26	27.37	0.00	462	0.0%	-15.7%	1.47	6.34	4.8%	0.6%	0.298	0.216	1.00%
Al Ahli Bank of Kuwait	0.295	0.014	4.98%	0.87	21.82	1.69	522	0.0%	21.9%	0.01	0.05	4.0%	0.6%	0.355	0.211	1.13%
Kuwait International Bank	0.200	-0.003	-1.48%	0.63	31.80	1.89	212	0.0%	-4.6%	0.37	1.80	1.9%	0.4%	0.259	0.192	0.46%
Total Banking Sector - 11 Companies							29,914			42.17	62.34					64.55%

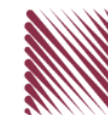
Basic Materials	Price			Valuation Multiples			MKT Cap	Price Performance		Trading Indicators		ROE	ROA	52 Week (KD)		MKT Cap
	Company	Close (KD)	Day Δ	Day % Δ	PBV(X)	PE(X)		DY%	Mn KD	MTD(%)	YTD (%)			Value (Mn KD)	(Mn Shrs)	
Qurain Petrochemical Industries	0.265	0.001	0.38%	0.65	10.14	6.82	284	0.00%	-23.63%	0.18	0.69	6.4%	5.2%	0.403	0.255	0.61%
Boubyan Petrochemical	0.809	0.003	0.37%	1.65	9.15	7.44	422	0.00%	-5.05%	0.11	0.14	19.1%	10.1%	1.125	0.769	0.91%
Al Kout Industrial Projects	0.406	0.000	0.00%	1.45	5.14	9.85	41	0.00%	-18.15%	0.00	0.00	30.5%	20.1%	0.545	0.406	0.09%
Kuwait Foundry	0.295	-0.003	-1.01%	1.22	12.57	0.00	21	0.00%	-20.05%	0.00	0.00	10.7%	10.3%	0.424	0.260	0.05%
Total Basic Materials - 4 Companies							769			0.30	0.83					1.66%

Consumer Goods	Price			Valuation Multiples			MKT Cap	Price Performance		Trading Indicators		ROE	ROA	52 Week (KD)		MKT Cap
	Company	Close (KD)	Day Δ	Day % Δ	PBV(X)	PE(X)		DY%	Mn KD	MTD(%)	YTD (%)			Value (Mn KD)	(Mn Shrs)	
Mezzan Holding	0.378	-0.002	-0.53%	1.11	38.73	4.13	118	0.0%	-34.5%	0.40	1.04	2.8%	1.3%	0.632	0.358	0.25%
Livestock Transport and Trading	0.125	-0.001	-0.79%	0.77	NM	0.00	26	0.0%	-31.3%	0.00	0.02	-14.5%	-8.2%	0.196	0.114	0.06%
Total Consumer Goods - 2 Companies							144			0.40	1.07					0.31%

Consumer Services	Price			Valuation Multiples			MKT Cap	Price Performance		Trading Indicators		ROE	ROA	52 Week (KD)		MKT Cap
	Company	Close (KD)	Day Δ	Day % Δ	PBV(X)	PE(X)		DY%	Mn KD	MTD(%)	YTD (%)			Value (Mn KD)	(Mn Shrs)	
Jazeera Airways	1.680	-0.001	-0.06%	12.14	13.58	2.74	370	1.5%	30.2%	0.03	0.02	164.8%	12.1%	2.099	0.829	0.80%
Kuwait National Cinema	0.890	0.000	0.00%	1.09	8.67	3.37	82	0.0%	0.9%	0.00	0.00	13.3%	6.1%	0.933	0.815	0.18%
Oula Fuel Marketing	0.147	0.000	0.00%	0.91	15.86	3.40	59	0.0%	-5.8%	0.00	0.00	5.6%	2.9%	0.178	0.140	0.13%
Al Soor Fuel Marketing	0.148	0.001	0.68%	0.87	18.88	3.40	60	0.0%	-4.5%	0.00	0.01	4.8%	3.6%	0.175	0.142	0.13%
Sultan Center Food Products	0.112	0.004	3.70%	0.65	0.90	0.00	31	0.0%	-46.7%	0.00	0.00	74.2%	12.2%	0.269	0.103	0.07%
Jiyad Holding	0.027	-0.001	-2.88%	0.31	NM	0.00	5	0.0%	-66.5%	0.09	3.48	-16.2%	-10.9%	0.099	0.015	0.01%
IFA Hotels and Resorts	0.028	-0.001	-3.45%	3.69	186.67	0.00	18	0.0%	-47.7%	0.15	5.11	2.0%	0.4%	0.073	0.025	0.04%
Kuwait Resorts	0.075	-0.003	-3.72%	0.49	10.58	3.77	15	0.0%	-22.2%	0.03	0.33	4.8%	4.2%	0.110	0.067	0.03%
Future Kid Entertainment and Real Estate	0.109	0.003	2.83%	0.94	9.54	0.00	12	0.0%	38.5%	0.00	0.04	10.4%	4.7%	0.130	0.074	0.03%
Al Eid Food	0.223	0.001	0.45%	1.76	13.56	3.08	38	0.0%	-3.4%	0.16	0.73	13.5%	10.1%	0.304	0.207	0.08%
Kuwait Hotels	0.178	0.000	0.00%	2.23	20.60	2.81	10	0.0%	154.3%	0.00	0.00	11.1%	7.4%	0.201	0.070	0.02%
Palms Agro Production	0.077	0.000	0.00%	0.78	NM	0.00	4	0.0%	12.3%	0.00	0.00	-13.8%	-10.9%	0.090	0.043	0.01%
ALI ALGanim	0.793	-0.004	-0.50%	3.66	12.44	0.00	220	1.0%	nm	0.06	0.07	27.8%	10.9%	0.966	0.750	0.47%
Total Consumer Services - 13 Companies							924			0.52	9.80					1.99%

DAILY MARKET COVERAGE REPORT

NIC MENA SECURITIES - RESEARCH AND STUDIES DEP



Financial Services	Price			Valuation Multiples			MKT Cap	Price Performance		Trading Indicators		ROE	ROA	52 Week (KD)		MKT Cap
	Company	Close (KD)	Day Δ	Day % Δ	PBV(X)	PE(X)		DY%	Mn KD	MTD(%)	YTD (%)			Value (Mn KD)	(Mn Shrs)	
Egypt Kuwait Holding	0.388	0.008	-2.11%	2.16	5.85	5.62	437	1.0%	-8.5%	0.01	0.03	37.1%	17.5%	0.465	0.360	0.94%
Kuwait Projects Company Holding	0.125	-0.005	-3.85%	0.66	320.51	3.85	306	-6.0%	-12.0%	0.43	3.36	0.2%	0.1%	0.215	0.118	0.66%
National Industries Group Holding	0.227	-0.006	-2.58%	0.95	5.22	4.77	489	0.0%	-5.8%	5.08	21.89	15.2%	6.5%	0.314	0.202	1.06%
Boursa Kuwait Securities Co	2.021	-0.089	-4.22%	6.96	21.61	3.08	406	-2.8%	0.0%	0.21	0.10	33.9%	22.2%	2.870	1.800	0.88%
GFH Financial Group	0.079	-0.001	-0.76%	0.91	9.74	4.58	274	0.0%	-20.1%	1.36	16.99	9.3%	1.2%	0.109	0.065	0.59%
National Investments	0.234	-0.008	-3.31%	0.93	8.75	18.60	187	1.3%	6.8%	0.58	2.38	10.9%	8.9%	0.475	0.190	0.40%
Tamdeen Investment	0.470	0.000	0.00%	0.54	12.15	2.13	160	-1.1%	24.0%	0.00	0.00	4.9%	3.8%	0.519	0.309	0.35%
Alimtiq Investment Group	0.075	-0.002	-2.23%	0.43	NM	11.81	76	-1.3%	-36.9%	0.11	1.50	-1.0%	-0.1%	0.140	0.069	0.16%
Commercial Facilities	0.174	-0.001	-0.57%	0.56	6.44	8.57	88	1.2%	-15.5%	0.04	0.20	8.8%	5.0%	0.228	0.165	0.19%
Aayan Leasing and Investment	0.109	-0.006	-5.22%	0.83	11.18	0.00	72	-2.7%	-34.1%	0.77	6.71	7.7%	5.8%	0.204	0.104	0.16%
Kuwait Investment	0.129	-0.006	-4.44%	0.62	7.48	18.52	71	0.0%	-54.1%	0.50	3.74	8.1%	4.6%	0.317	0.113	0.15%
Noor Financial Investment	0.185	0.007	3.93%	1.15	5.17	2.70	94	2.8%	-27.3%	0.33	1.86	22.7%	16.0%	0.319	0.167	0.20%
Arzan Financial Group for Financing and Investmei	0.128	0.001	0.79%	0.86	8.04	1.90	103	0.0%	-17.7%	0.01	0.11	11.3%	8.2%	0.180	0.109	0.22%
Kuwait Financial Centre	0.117	0.000	0.00%	0.57	8.85	8.14	59	-2.5%	-32.1%	0.04	0.34	6.9%	4.0%	0.197	0.104	0.13%
Gulf Investment House	0.400	-0.001	-0.25%	3.81	NM	0.00	163	0.0%	33.3%	0.21	0.51	-3.0%	-2.0%	0.422	0.217	0.35%
Arabi Group Holdings	0.260	0.002	0.78%	1.55	NM	0.00	43	-3.3%	-10.7%	0.08	0.30	-29.0%	-4.0%	0.499	0.142	0.09%
Kuwait and Middle East Financial Investment	0.109	-0.006	-5.22%	0.95	12.69	6.09	24	0.0%	-27.3%	0.00	0.02	7.5%	5.2%	0.175	0.105	0.05%
Privatization Holding	0.035	-0.001	-1.96%	0.29	NM	0.00	21	0.0%	-35.9%	0.04	1.19	-7.1%	-5.5%	0.070	0.033	0.05%
Asiya Capital Investments	0.041	-0.001	-2.63%	0.27	2.25	0.00	32	0.0%	-21.7%	0.15	3.52	17.9%	17.6%	0.071	0.039	0.07%
Umm Al Qaiwain General Investment Co	0.093	0.000	0.00%	0.57	4.97	5.38	34	0.0%	6.7%	0.00	0.00	12.0%	10.0%	0.108	0.075	0.07%
Securities House	0.056	0.000	0.00%	0.57	9.64	0.00	24	-1.2%	-42.9%	0.04	0.72	5.8%	5.0%	0.115	0.052	0.05%
Kamco Investment	0.097	-0.001	-1.22%	0.53	3.83	10.19	33	0.0%	-24.9%	0.01	0.11	14.5%	6.9%	0.167	0.089	0.07%
First Investment	0.078	0.001	1.17%	0.68	111.29	0.00	35	0.0%	-7.5%	0.13	1.68	0.6%	0.7%	0.104	0.068	0.07%
Inovest BSC Public	0.082	-0.003	-3.96%	0.00	NM	0.00	24	5.2%	-30.2%	0.17	1.98	2.7%	1.7%	0.189	0.070	0.05%
Coast Investment and Development	0.075	-0.001	-0.67%	0.74	10.19	6.67	35	0.0%	-29.0%	0.04	0.48	7.2%	6.8%	0.127	0.071	0.07%
Al Madar Investment	0.101	0.000	0.00%	0.95	59.06	0.00	21	0.0%	-15.1%	0.00	0.00	1.6%	1.7%	0.128	0.083	0.05%
Bayan Investment	0.035	0.000	0.00%	0.31	NM	0.00	13	0.0%	-28.8%	0.00	0.00	-0.5%	-0.6%	0.060	0.031	0.03%
Al Manar Financing and Leasing	0.056	0.005	8.82%	0.55	18.08	0.00	15	0.0%	-11.0%	0.00	0.03	2.9%	2.3%	0.079	0.049	0.03%
Manazel Holding	0.027	-0.002	-6.53%	0.59	9.32	0.00	12	-4.2%	-46.9%	0.05	1.72	6.2%	2.0%	0.060	0.025	0.03%
Kuwait Finance and Investment	0.063	0.000	0.00%	0.47	27.39	0.00	19	0.0%	-27.4%	0.00	0.00	1.7%	1.6%	0.104	0.058	0.04%
National International Holding	0.100	-0.005	-4.33%	0.57	7.43	4.67	22	0.0%	-32.6%	0.08	0.80	7.6%	5.3%	0.171	0.091	0.05%
Osoul Investment	0.068	-0.002	-2.98%	0.63	NM	15.02	9	0.0%	-16.3%	0.01	0.12	-4.4%	-4.0%	0.118	0.062	0.02%
UniCap Investment and Finance	0.054	0.001	0.93%	0.60	64.00	0.00	12	0.0%	-20.6%	0.01	0.17	1.9%	0.2%	0.097	0.051	0.03%
Amar Finance and Leasing	0.064	0.000	-0.16%	0.59	3.45	0.00	12	0.0%	-2.9%	0.00	0.00	18.6%	17.3%	0.097	0.057	0.03%
Gulf North Africa Holding	0.130	-0.003	-2.26%	1.72	59.40	0.00	20	0.0%	51.0%	0.21	1.53	3.0%	2.4%	0.141	0.057	0.04%
International Financial Advisors	0.092	-0.001	-0.97%	0.60	36.95	0.00	23	0.0%	-18.6%	0.01	0.06	1.9%	0.7%	0.129	0.082	0.05%
Credit Rating and Collection	0.016	0.000	-0.61%	0.56	NM	0.00	3	-4.7%	-59.2%	0.00	0.08	-0.4%	-0.3%	0.069	0.016	0.01%
Ekttitab Holding	0.012	0.000	0.00%	0.38	NM	0.00	4	0.0%	-45.5%	0.01	0.94	-16.8%	-12.9%	0.024	0.009	0.01%
Kuwait Syrian Holding Co	0.037	0.000	0.55%	0.36	5.94	0.00	6	-0.5%	-14.0%	0.00	0.00	8.7%	6.2%	0.060	0.026	0.01%
Warba Capital Holding	0.099	0.000	0.00%	1.09	NM	0.00	10	0.0%	14.5%	0.00	0.00	-0.8%	-0.7%	0.140	0.070	0.02%
National Consumer Holding	0.111	-0.002	-1.77%	5.03	NM	0.00	33	0.0%	-7.4%	3.60	31.52	-8.0%	-7.5%	0.191	0.097	0.07%
Al Deera Holding	0.168	0.008	5.00%	1.12	8.46	0.00	15	0.0%	-16.0%	0.00	0.01	12.5%	6.5%	0.200	0.145	0.03%
AL Safat Investment	0.109	-0.003	-2.68%	1.39	NM	0.00	31	0.0%	-10.6%	0.76	6.78	-1.8%	-1.6%	0.270	0.099	0.07%
Gulf Franchising Holding	0.076	-0.004	-5.00%	1.49	NM	0.00	3	-8.3%	-20.8%	0.00	0.00	-5.7%	-1.6%	0.148	0.050	0.01%
Total Financial Services - 44 Companies							3,572			15.09	113.51					7.71%

DAILY MARKET COVERAGE REPORT

NIC MENA SECURITIES - RESEARCH AND STUDIES DEP



Health Care	Price			Valuation Multiples			MKT Cap	Price Performance		Trading Indicators		ROE	ROA	52 Week (KD)		MKT Cap
	Company	Close (KD)	Day Δ	Day % Δ	PBV(X)	PE(X)		DY%	Mn KD	MTD(%)	YTD (%)			Value (Mn KD)	(Mn Shrs)	
Al-Maidan Clinic for Oral Health Services	0.569	0.000	0.00%	2.51	13.91	0.00	142	0.0%	-54.1%	0.00	0.00	19.4%	12.5%	1.260	0.500	0.31%
Advanced Technology	0.520	0.000	0.00%	1.16	11.23	2.88	78	0.0%	0.4%	0.00	0.00	10.7%	2.1%	0.595	0.450	0.17%
Yiaco Medical	0.450	0.000	0.00%	43.51	NM	0.00	8	0.0%	2.7%	0.00	0.00	-161.7%	-4.7%	0.480	0.399	0.02%
Total Health Care - 3 Companies							228			0.00	0.00					0.49%

Industrials	Price			Valuation Multiples			MKT Cap	Price Performance		Trading Indicators		ROE	ROA	52 Week (KD)		MKT Cap
	Company	Close (KD)	Day Δ	Day % Δ	PBV(X)	PE(X)		DY%	Mn KD	MTD(%)	YTD (%)			Value (Mn KD)	(Mn Shrs)	
Agility Public Warehousing	0.697	-0.003	-0.43%	1.19	53.53	2.38	1,761	4.8%	-11.5%	8.71	12.34	2.7%	2.2%	1.062	0.634	3.80%
Human Soft Holding	3.340	0.040	1.21%	3.69	7.72	12.12	406	0.0%	3.6%	0.05	0.02	48.7%	39.9%	3.704	3.006	0.88%
Alafco Aviation Lease and Finance	0.176	0.002	1.15%	0.65	NM	0.00	168	1.1%	-19.3%	0.10	0.57	-15.9%	-3.4%	0.256	0.167	0.36%
Kuwait Cement	0.215	0.006	2.87%	0.79	NM	2.39	153	0.0%	-6.9%	0.08	0.37	-1.1%	-0.7%	0.295	0.198	0.33%
Gulf Cable and Electrical Industries	1.120	0.008	0.72%	1.04	10.38	5.40	233	0.0%	28.6%	0.73	0.64	11.0%	9.0%	1.850	0.826	0.50%
Integrated Holding	0.362	0.000	0.00%	1.49	27.68	2.76	92	0.0%	-2.2%	0.21	0.57	5.4%	3.4%	0.478	0.351	0.20%
Kuwait Portland Cement	0.785	-0.010	-1.26%	1.10	16.42	8.81	79	0.0%	-19.9%	0.03	0.03	6.8%	5.3%	1.240	0.755	0.17%
Educational Holding Group	2.831	-0.169	-5.63%	4.81	10.75	17.76	59	0.0%	-29.2%	0.02	0.01	30.0%	17.2%	5.073	2.744	0.13%
United Projects for Aviation Services	0.224	-0.008	-3.45%	0.82	80.00	0.00	85	0.0%	-9.7%	0.00	0.00	1.0%	0.6%	0.318	0.182	0.18%
Heavy Engineering Industries and Shipbuilding	0.638	0.001	0.16%	1.71	21.08	3.14	115	0.0%	25.3%	0.49	0.76	8.2%	3.2%	0.960	0.442	0.25%
National Industries	0.189	0.000	0.00%	0.76	11.02	5.29	66	0.0%	-2.1%	0.00	0.00	6.8%	5.1%	0.260	0.181	0.14%
ACICO Industries	0.085	0.001	0.83%	0.39	NM	0.00	28	0.0%	-38.6%	0.10	1.19	-1.9%	-0.5%	0.208	0.076	0.06%
Kuwait Company for Process Plant Construction a	0.296	-0.005	-1.66%	1.19	19.18	8.23	35	0.0%	-37.6%	0.02	0.07	6.1%	3.5%	0.527	0.286	0.08%
Ras Al Khaimah for White Cement and Constructi	0.140	0.000	0.00%	1.24	27.79	5.92	70	0.0%	11.1%	0.00	0.00	4.6%	3.7%	0.175	0.086	0.15%
Combined Group Contracting	0.388	-0.001	-0.26%	1.44	5.95	6.43	66	0.0%	9.6%	0.06	0.16	26.3%	5.8%	0.500	0.308	0.14%
Kuwait and Gulf Link Transport	0.059	0.000	0.17%	0.35	3.18	0.00	16	0.0%	-13.6%	0.01	0.19	11.6%	2.6%	0.106	0.051	0.04%
Shuaiba Industrial	0.157	-0.003	-1.88%	0.86	13.06	7.50	16	0.0%	-30.2%	0.01	0.06	6.6%	5.4%	0.310	0.137	0.03%
National Cleaning	0.034	0.000	0.90%	0.27	NM	0.00	8	0.0%	-40.8%	0.00	0.00	-13.9%	-4.1%	0.080	0.031	0.02%
Fujairah Cement Industries	0.039	0.000	0.00%	0.19	NM	0.00	14	0.0%	-27.0%	0.00	0.00	-12.7%	-6.3%	0.069	0.028	0.03%
Mubarrad Holding	0.074	-0.004	-4.55%	0.57	6.22	6.49	12	0.0%	-33.2%	0.00	0.02	9.3%	8.2%	0.130	0.071	0.03%
Specialities Group Holding	0.087	-0.002	-2.25%	0.46	9.46	7.64	14	0.0%	-30.0%	0.13	1.43	5.0%	3.6%	0.164	0.076	0.03%
Salbookh Trading	0.019	0.000	2.16%	0.57	NM	0.00	2	0.0%	-56.5%	0.00	0.01	-51.7%	-28.6%	0.072	0.017	0.00%
Metal and Recycling	0.074	0.003	4.52%	0.96	NM	0.00	7	0.0%	-22.1%	0.00	0.03	-12.0%	-2.0%	0.136	0.068	0.01%
Equipment Holding	0.031	-0.002	-4.86%	0.50	NM	0.00	3	0.0%	-42.6%	0.00	0.01	-11.1%	-3.2%	0.079	0.030	0.01%
Jassim Transport & Stevedoring	0.319	-0.010	-3.04%	1.08	13.91	4.86	48	-3.0%	-21.6%	0.01	0.12	8.0%	6.3%	0.450	0.307	0.10%
Total Industrials - 24 Companies							3,555			10.78	18.61					7.67%

DAILY MARKET COVERAGE REPORT

NIC MENA SECURITIES - RESEARCH AND STUDIES DEP



Insurance	Price			Valuation Multiples			MKT Cap	Price Performance		Trading Indicators		ROE	ROA	52 Week (KD)		MKT Cap
	Company	Close (KD)	Day Δ	Day % Δ	PBV(X)	PE(X)		DY%	Mn KD	MTD(%)	YTD (%)			Value (Mn KD)	(Mn Shrs)	
Gulf Insurance Group	0.995	0.000	0.00%	1.16	4.26	10.65	282	0.0%	-7.0%	0.00	0.00	28.6%	5.5%	1.200	0.866	0.61%
Al Ahleia Insurance	0.555	0.045	8.82%	0.93	7.66	6.86	120	0.0%	9.9%	0.01	0.01	12.5%	4.4%	0.612	0.453	0.26%
Kuwait Insurance	0.447	0.000	0.00%	0.67	6.93	7.38	83	0.0%	15.5%	0.00	0.00	10.4%	6.1%	0.497	0.379	0.18%
Kuwait Reinsurance	0.295	0.000	0.00%	1.07	10.42	1.55	70	0.0%	16.9%	0.00	0.00	10.8%	3.4%	0.373	0.217	0.15%
Bahrain Kuwait Insurance	0.191	0.000	0.00%	1.33	11.98	8.44	29	0.0%	0.0%	0.00	0.00	11.0%	2.1%	0.191	0.191	0.06%
Warba Insurance and Reinsurance	0.131	0.000	0.00%	0.56	9.11	7.63	22	1.6%	-17.6%	0.00	0.00	6.2%	2.1%	0.176	0.119	0.05%
First Takaful Insurance	0.048	0.000	0.00%	0.63	296.88	0.00	5	0.0%	-5.0%	0.00	0.00	0.2%	0.1%	0.081	0.034	0.01%
Wethaq Takaful Insurance	0.037	-0.003	-8.19%	0.33	19.37	0.00	4	0.0%	-27.3%	0.03	0.82	1.7%	1.7%	0.102	0.024	0.01%
Total Insurance - 8 Companies							615			0.04	0.84					1.33%

Energy	Price			Valuation Multiples			MKT Cap	Price Performance		Trading Indicators		ROE	ROA	52 Week (KD)		MKT Cap
	Company	Close (KD)	Day Δ	Day % Δ	PBV(X)	PE(X)		DY%	Mn KD	MTD(%)	YTD (%)			Value (Mn KD)	(Mn Shrs)	
National Petroleum Services	0.750	-0.017	-2.22%	1.89	13.44	4.56	73	0.0%	-8.5%	0.00	0.00	14.5%	11.6%	0.880	0.625	0.16%
Independent Petroleum Group	0.453	-0.020	-4.23%	0.83	15.17	6.34	82	0.0%	-23.0%	0.00	0.00	5.5%	1.0%	0.614	0.368	0.18%
Burgan for Well Drilling Trading and Maintenance	0.117	-0.003	-2.50%	0.40	9.18	2.43	28	0.0%	-18.2%	0.08	0.70	4.4%	1.4%	0.172	0.100	0.06%
Energy House Holding	0.021	0.000	-1.91%	0.74	NM	0.00	15	0.0%	-67.5%	0.00	0.01	-1.4%	-2.5%	0.086	0.019	0.03%
Gulf Petroleum Investment	0.016	-0.001	-3.61%	0.23	NM	0.00	7	0.0%	-34.7%	0.03	1.56	-4.0%	-2.6%	0.031	0.013	0.02%
Senergy Holding	0.038	-0.002	-4.80%	0.75	44.88	0.00	8	0.0%	-23.1%	0.01	0.14	1.7%	1.4%	0.063	0.036	0.02%
Total Energy - 6 Companies							213			0.12	2.41					0.46%

DAILY MARKET COVERAGE REPORT

NIC MENA SECURITIES - RESEARCH AND STUDIES DEP



Real Estate	Price		Valuation Multiples					MKT Cap	Performance		Trading Indicators		ROE	ROA	2 Week (KD)		MKT Cap
Company	Close (KD)	Day Δ	Day % Δ	PBV(X)	PE(X)	DY%	Mn KD	MTD(%)	YTD (%)	Value (Mn KD)	(Mn Shrs)	(%)	(%)	High	Low	%	
Mabane Co.	0.862	-0.008	-0.92%	1.97	18.24	1.52	1,070	0.0%	15.2%	0.23	0.27	11.2%	5.4%	0.910	0.715	2.31%	
Salhia Real Estate	0.468	0.013	2.86%	1.55	20.00	3.14	241	0.0%	-7.1%	0.46	0.99	7.9%	3.2%	0.578	0.428	0.52%	
Commercial Real Estate	0.102	-0.001	-0.97%	0.62	10.48	4.85	179	0.0%	-18.4%	0.58	5.58	6.2%	3.3%	0.140	0.094	0.39%	
National Real Estate	0.140	0.001	0.72%	0.78	1.27	0.00	260	0.0%	-24.0%	0.74	5.21	64.5%	38.6%	0.212	0.125	0.56%	
Tamdeen Real Estate	0.302	0.001	0.33%	0.59	6.96	3.32	121	0.0%	-10.9%	0.00	0.00	9.2%	3.9%	0.375	0.296	0.26%	
Kuwait Real Estate	0.103	-0.002	-1.90%	0.75	12.55	2.77	95	0.0%	-40.7%	0.94	8.92	6.0%	2.5%	0.187	0.097	0.21%	
United Real Estate	0.077	0.005	6.21%	0.48	240.63	0.00	83	-0.9%	2.1%	0.00	0.00	0.2%	-0.1%	0.121	0.064	0.18%	
First Dubai for Real Estate Development	0.049	0.003	6.52%	0.47	32.89	0.00	36	0.0%	-53.4%	0.39	7.88	1.5%	1.2%	0.120	0.044	0.08%	
Al Mazaya Holding	0.046	0.000	0.00%	0.47	41.91	0.00	29	0.0%	-39.7%	0.17	3.52	1.1%	0.6%	0.089	0.043	0.06%	
Ajial Real Estate Entertainment	0.282	0.000	0.00%	0.42	17.40	1.77	55	0.0%	-7.2%	0.00	0.00	2.4%	2.0%	0.345	0.260	0.12%	
Injazzat Real Estate Development	0.080	-0.001	-0.63%	0.48	6.76	6.25	27	0.0%	-20.5%	0.03	0.38	7.0%	3.6%	0.114	0.070	0.06%	
Munshaat Real Estate Projects	0.067	0.001	1.35%	2.08	12.74	0.00	22	-3.7%	-5.7%	0.00	0.00	17.4%	1.5%	0.081	0.052	0.05%	
Aayan Real Estate	0.065	0.002	2.87%	0.46	62.02	0.00	27	0.0%	-27.1%	0.00	0.00	0.7%	1.4%	0.105	0.056	0.06%	
Al Argan International Real Estate	0.088	0.002	1.86%	0.29	32.05	0.00	22	0.0%	-25.2%	0.01	0.08	0.9%	0.3%	0.144	0.073	0.05%	
Al-Enmaa Real Estate	0.064	-0.001	-1.23%	0.70	NM	0.00	29	0.0%	-13.8%	0.08	1.18	-5.9%	NM	0.091	0.056	0.06%	
Arkan Al Kuwait Real Estate	0.125	0.000	0.00%	0.88	12.18	4.80	31	0.0%	0.8%	0.00	0.02	7.4%	2.3%	0.152	0.113	0.07%	
Kuwait Business Town Real Estate	0.054	0.001	1.31%	0.68	15.13	0.00	31	0.0%	-33.3%	0.08	1.41	3.8%	2.8%	0.100	0.047	0.07%	
Dalqan Real Estate	0.219	0.002	0.92%	1.96	202.78	0.00	13	0.0%	0.9%	0.01	0.04	1.0%	1.0%	0.282	0.195	0.03%	
Sokouk Holding	0.025	0.000	0.80%	0.59	NM	0.00	14	0.0%	-22.7%	0.00	0.19	-2.9%	-1.7%	0.038	0.020	0.03%	
Tijara and Realestate Investment	0.049	-0.006	-10.56%	0.45	7.52	5.46	18	3.4%	-19.6%	0.18	3.47	6.0%	3.2%	0.089	0.044	0.04%	
Al-Arabiya Real Estate	0.034	0.002	7.55%	0.41	NM	0.00	17	0.0%	-18.4%	0.08	2.53	-23.1%	-7.3%	0.052	0.026	0.04%	
Aqar Real Estate Investments	0.057	0.002	4.40%	0.47	18.18	6.12	13	0.0%	-27.8%	0.01	0.14	2.6%	2.1%	0.098	0.052	0.03%	
Mashaer Holding	0.055	0.000	0.00%	0.65	NM	0.00	10	0.0%	-21.7%	0.00	0.00	-6.5%	-3.2%	0.086	0.050	0.02%	
Dar Al Thuraya Real Estate	0.170	0.000	0.00%	1.47	25.07	0.00	25	0.0%	61.9%	0.00	0.00	6.0%	5.3%	0.172	0.090	0.05%	
Osos Holding Group	0.103	0.005	5.10%	0.90	8.20	10.20	11	0.0%	-1.9%	0.01	0.06	11.2%	7.1%	0.147	0.094	0.02%	
Al Massaleh Real Estate	0.042	0.000	0.00%	0.68	NM	0.00	10	0.0%	-20.3%	0.00	0.00	-15.4%	-3.2%	0.060	0.036	0.02%	
Kuwait Remal Real Estate	0.012	0.000	-2.40%	1.56	NM	0.00	4	0.0%	-36.1%	0.00	0.13	-110.3%	-12.4%	0.024	0.010	0.01%	
Kuwait Real Estate Holding	0.037	0.002	4.26%	0.69	13.30	0.00	7	0.0%	-30.5%	0.00	0.00	5.1%	1.7%	0.059	0.032	0.01%	
Taameer Real Estate Investment	0.020	-0.001	-4.88%	0.31	NM	0.00	4	-4.9%	-52.8%	0.01	0.42	-6.5%	-4.9%	0.054	0.018	0.01%	
Sanam Real Estate	0.059	0.000	0.17%	0.77	26.29	0.00	7	-1.0%	-25.3%	0.00	0.01	2.9%	2.8%	0.100	0.053	0.02%	
Mena Real Estate	0.031	0.000	-0.32%	0.27	NM	0.00	4	0.0%	-38.2%	0.00	0.05	-6.8%	-5.4%	0.105	0.030	0.01%	
Al Masaken International Real Estate Developmen	0.030	-0.001	-2.91%	0.48	NM	0.00	3	0.0%	-31.7%	0.01	0.30	-1.1%	-0.4%	0.069	0.028	0.01%	
Real Estate Trade Centers	0.052	-0.003	-4.79%	0.29	21.63	0.00	7	0.0%	-26.1%	0.02	0.46	1.3%	1.1%	0.123	0.043	0.02%	
Land United Real Estate	0.068	0.000	0.00%	0.60	NM	0.00	10	0.0%	-27.6%	0.00	0.00	-4.8%	-1.5%	0.144	0.052	0.02%	
Total Real Estate - 34 Companies							2,537			4.02	43.23					5.47%	

DAILY MARKET COVERAGE REPORT

NIC MENA SECURITIES - RESEARCH AND STUDIES DEP



	Close (KD)	Day Δ	Day % Δ	PBV(X)	PE(X)	DY%	Mn KD	MTD(%)	YTD (%)	Value (Mn KD)	(Mn Shrs)	(%)	(%)	High	Low	%
Automated Systems	0.079	-0.002	-2.35%	0.70	NM	0.00	8	-2.5%	-16.0%	0.00	0.00	-3.4%	-3.0%	0.116	0.074	0.02%
Total Technology - 1 Companies				0.70	NM	0.0%	8			0.00	0.00	-3.40%	-2.96%			0.02%

Telecom	Price			Valuation Multiples			MKT Cap	Price Performance		Trading Indicators		ROE	ROA	52 Week (KD)		MKT Cap
Company	Close (KD)	Day Δ	Day % Δ	PBV(X)	PE(X)	DY%	Mn KD	MTD(%)	YTD (%)	Value (Mn KD)	(Mn Shrs)	(%)	(%)	High	Low	%
Mobile Telecommunications	0.595	0.001	0.17%	2.17	14.06	5.56	2,575	-1.5%	0.0%	2.27	3.82	15.6%	4.3%	0.698	0.564	5.56%
Kuwait Telecommunications	0.561	-0.001	-0.18%	2.52	12.90	5.34	560	0.0%	31.2%	0.09	0.16	20.1%	10.9%	1.189	0.418	1.21%
National Mobile Telecommunications	0.990	-0.010	-1.00%	0.95	15.00	3.50	496	0.0%	58.7%	0.04	0.04	6.2%	3.6%	1.280	0.615	1.07%
AAN Digital Services	0.016	0.000	0.00%	0.60	NM	0.00	14	0.0%	-2.4%	0.00	0.00	NM	NM	0.020	0.015	0.03%
Hayat Communications	0.062	0.001	0.82%	0.49	NM	0.00	5	0.0%	-42.0%	0.00	0.01	-0.7%	-0.3%	0.124	0.052	0.01%
Telecom - 5 Companies							3,650			2.41	4.04					7.88%

Utilities	Price			Valuation Multiples			MKT Cap	Price Performance		Trading Indicators		ROE	ROA	52 Week (KD)		MKT Cap
Company	Close (KD)	Day Δ	Day % Δ	PBV(X)	PE(X)	DY%	Mn KD	MTD(%)	YTD (%)	Value (Mn KD)	(Mn Shrs)	(%)	(%)	High	Low	%
Shamal Az-Zour Al-Oula Power & Water	0.193	0.000	0.00%	2.17	14.78	9.33	212	-1.0%	-15.4%	0.11	0.56	19.1%	2.9%	0.247	0.190	0.46%
Total Utilities - 1 Companies							212			0.11	0.56					0.46%

Total Market 157 Companies				2.00	31.51	3.99	46,341			75.94	257.12					100%
-----------------------------------	--	--	--	-------------	--------------	-------------	---------------	--	--	--------------	---------------	--	--	--	--	-------------

End of Report

The information contained in this document is proprietary to NIC and is for use only by the persons to whom it is issued. This document is confidential and may not be distributed either in part or in whole without the express agreement of NIC. It is intended solely for the use of the individual or entity to whom it is addressed and others authorized to receive it.

Note : ROE and ROA is calculated based on LFY net profit & shareholders' equity and LFY Operating Profits & Total Assets

Sources : National Investments Company Research and Studies Departments, Boursa, Refinitiv.



شركة الاستثمار الوطنية
NATIONAL INVESTMENTS COMPANY

Sharq, Al Mutanabi Street, Khaleejia Tower | P.O. Box 25667, Safat 13117, Kuwait

T.: +965 2226 6666 | Fax: +965 2226 6793 | www.nic.com.kw